

AZIZI DAISY

— R E S I D E N C E —

AZIZI DAISY offers the savvy investor a choice of one, two and three bedroom apartments all fully fitted with European style kitchen with high-end finishes. Surrounded by family community in a calm setting of Al Furjan, Azizi Daisy offers convenient living with close vicinity of shopping malls, public beach, restaurants, golfing courses and much more.

With its simple aesthetics and modern European interiors, Azizi Daisy is the perfect option for a better living. All Azizi Developments properties in Al Furjan are designed in a similar manner in order to keep consistency and elegance while providing top-notch facilities and amenities.

FEATURES

- Combination of furnished 1 , 2 and 3 B/R Apartments with balcony / terrace along with private parking spaces
- Fully Fitted Kitchen
- Podium Level Swimming Pool along with Kids Pool area
- Fitness Club with Sauna and Steam Facilities at podium level
- High Ceiling Lobby with extravagant finishing
- Located at Al Furjan – Master Community

Project No: 1572
Escrow A/C Bank: ADCB
Escrow A/C No: 10174999159014

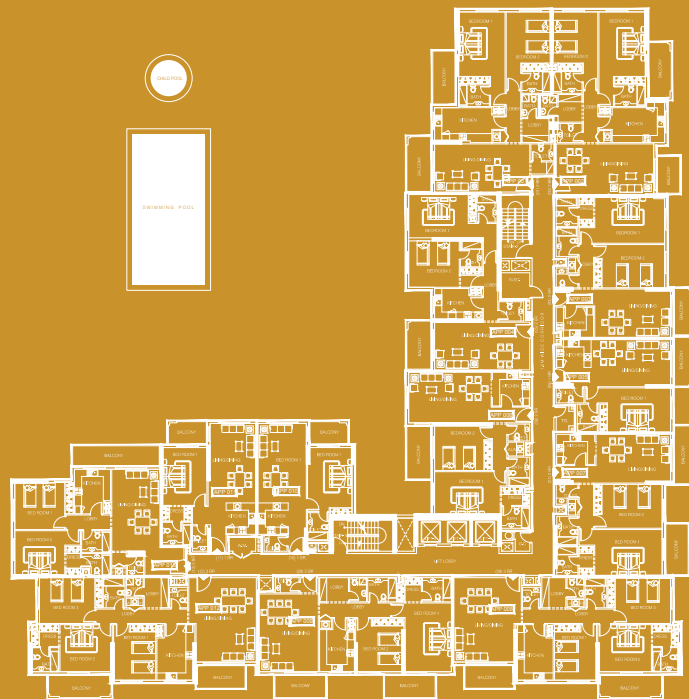
FACT SHEET

Total no. of units:	129
One bedroom:	30
Two bedroom:	79
Three bedroom:	20
Total land area:	4,083 sq.m.
Built up area:	26,150 sq.m.



Internal Community Road

Typical Floor Plate

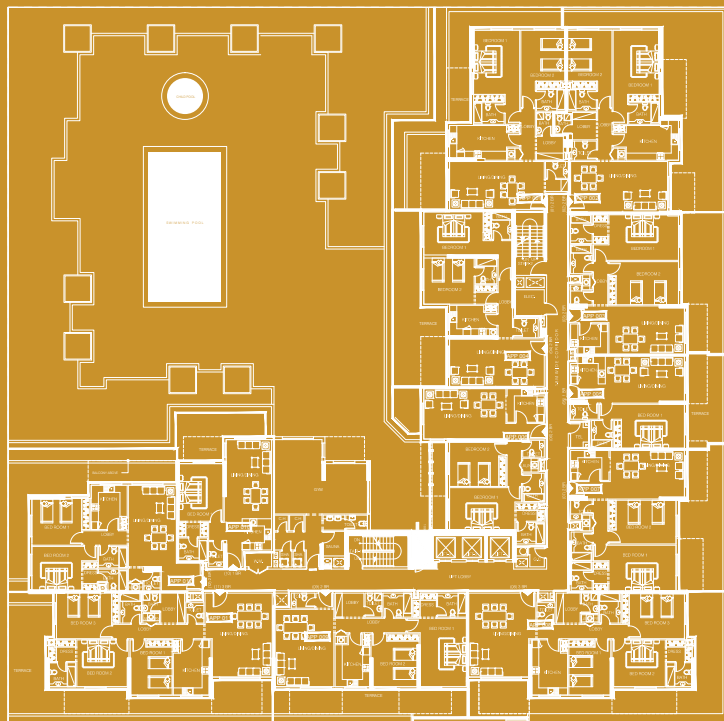


Side Road View



Community View
Road Facing (D - 59)

Podium Floor Plate

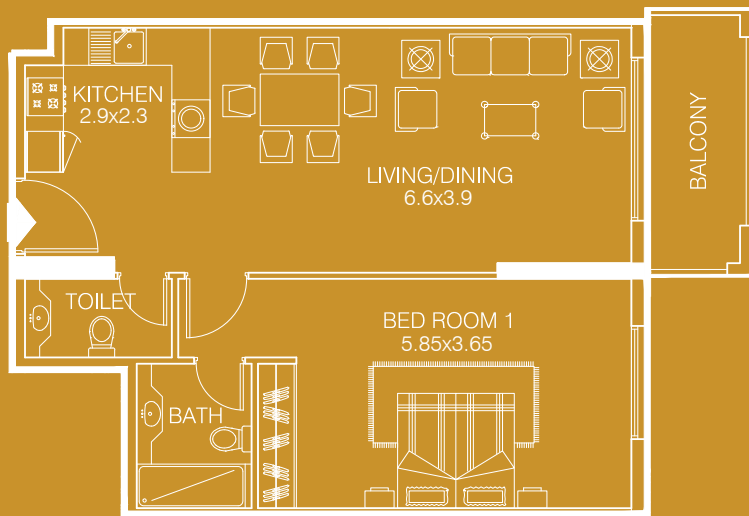


Internal Community Road

Side Road View

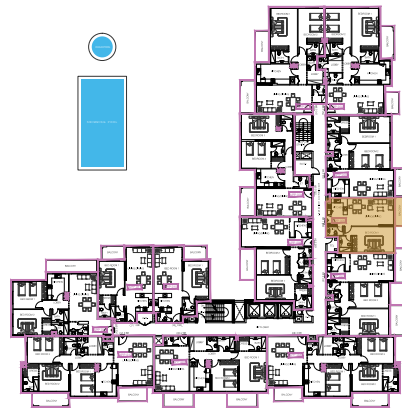
Community View
Road Facing (D - 59)

ONE BEDROOM APARTMENT - TYPE 1A



- sellable area and balcony location may vary for unit to unit
- kitchen appliances and bath fixtures are indicative and may vary

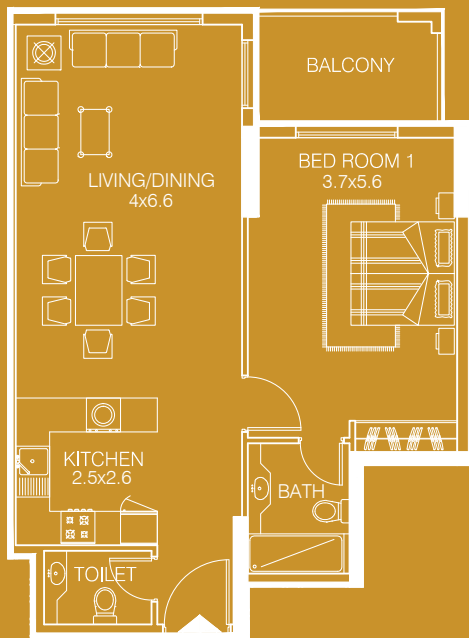
UNIT NO : 05



TYPE:	One B/R
AREA:	80.79 Sq m.
AREA:	869.30 Sq Ft.
FACING:	Side Road View
DIRECTION:	North West

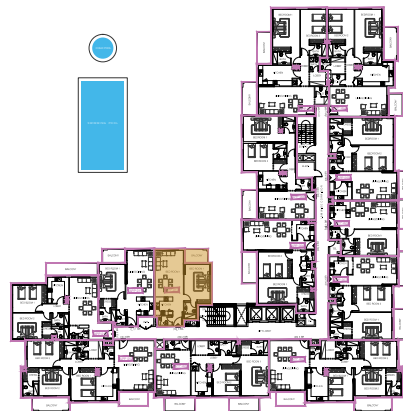
Drawings are provided by our consultants. All dimensions, features and amenities are approximate at time of printing. Actual area may vary from stated area. Drawings not to scale E&OE. The developer reserves the right to make revisions to the floor plans and any features, materials and dimensions mentioned without further notice.

ONE BEDROOM APARTMENT - TYPE 2A



- sellable area and balcony location may vary for unit to unit
- kitchen appliances and bath fixtures are indicative and may vary

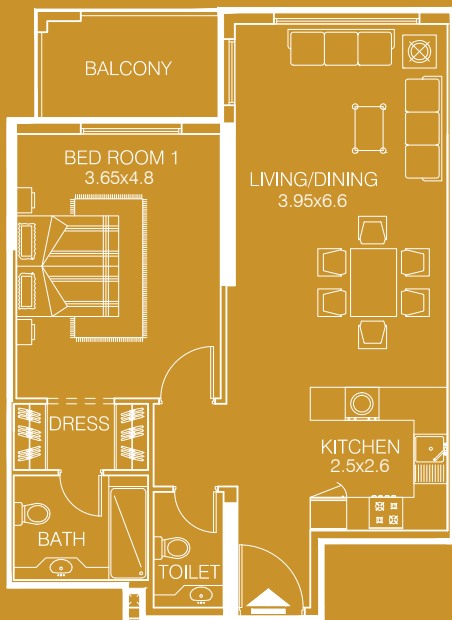
UNIT NO : 10



TYPE:	One B/R
AREA:	80.75 Sq m.
AREA:	868.87 Sq Ft.
FACING:	Pool View
DIRECTION:	South West

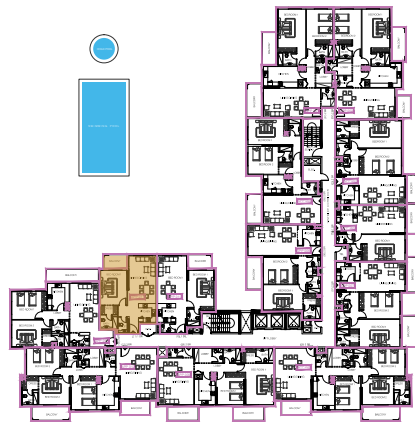
Drawings are provided by our consultants. All dimensions, features and amenities are approximate at time of printing. Actual area may vary from stated area. Drawings not to scale E&OE. The developer reserves the right to make revisions to the floor plans and any features, materials and dimensions mentioned without further notice.

ONE BEDROOM APARTMENT - TYPE 3A



- sellable area and balcony location may vary for unit to unit
- kitchen appliances and bath fixtures are indicative and may vary

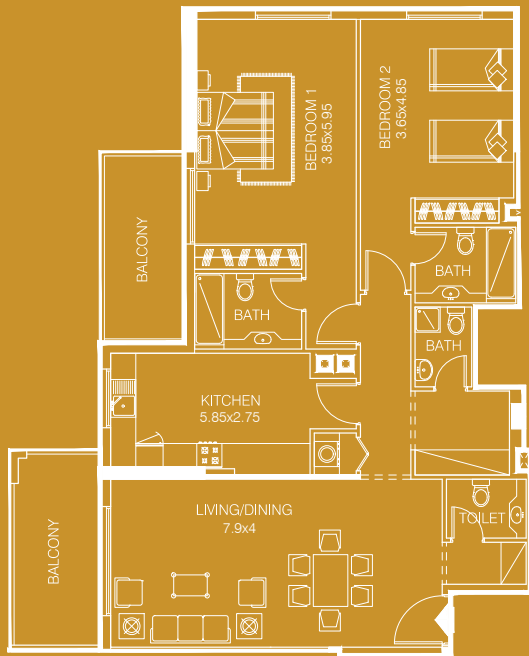
UNIT NO : 11



TYPE:	One B/R
AREA:	82.07 Sq m.
AREA:	883.07 Sq Ft.
FACING:	Pool View
DIRECTION:	South West

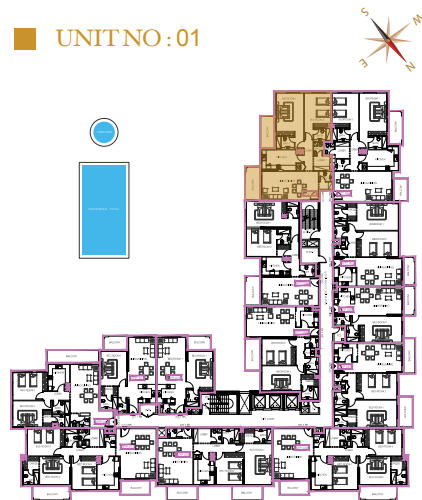
Drawings are provided by our consultants. All dimensions, features and amenities are approximate at time of printing. Actual area may vary from stated area. Drawings not to scale E&OE. The developer reserves the right to make revisions to the floor plans and any features, materials and dimensions mentioned without further notice.

TWO BEDROOM APARTMENT - TYPE 1B



- sellable area and balcony location may vary for unit to unit
- kitchen appliances and bath fixtures are indicative and may vary

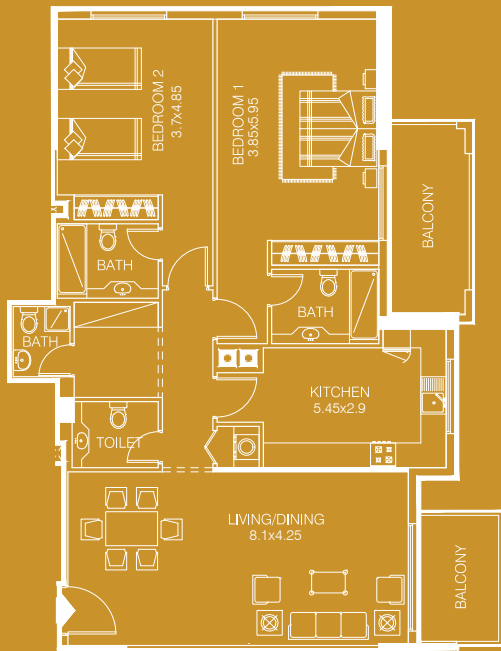
UNIT NO : 01



TYPE:	Two B/R
AREA:	152.89 Sq m.
AREA:	1645.10 Sq Ft.
FACING:	Pool View
DIRECTION:	South East

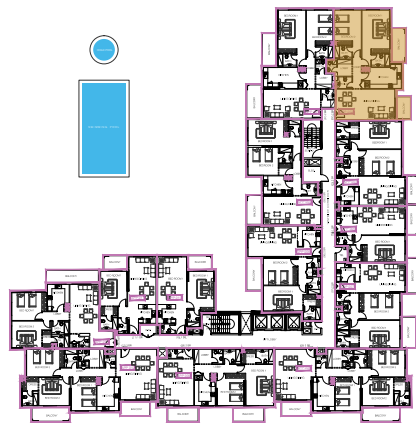
Drawings are provided by our consultants. All dimensions, features and amenities are approximate at time of printing. Actual area may vary from stated area. Drawings not to scale E&OE. The developer reserves the right to make revisions to the floor plans and any features, materials and dimensions mentioned without further notice.

TWO BEDROOM APARTMENT - TYPE 2B



- sellable area and balcony location may vary for unit to unit
- kitchen appliances and bath fixtures are indicative and may vary

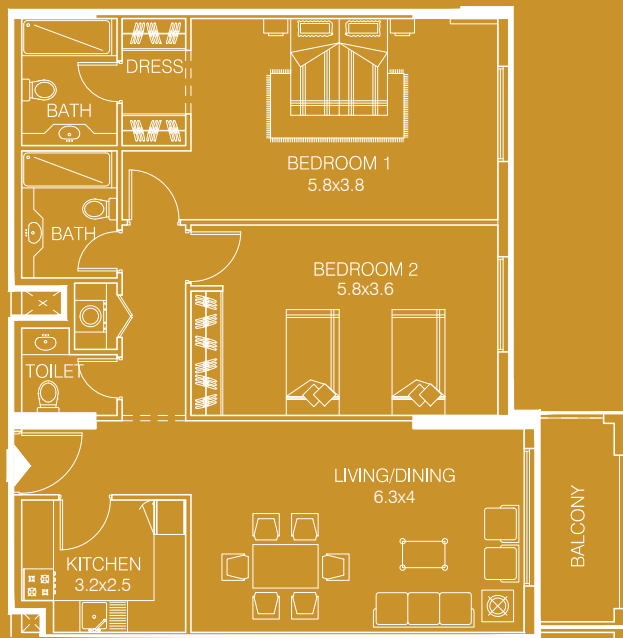
UNIT NO : 02



TYPE:	Two B/R
AREA:	150.09 Sq m.
AREA:	1614.97 Sq Ft.
FACING:	Side Road View
DIRECTION:	North West

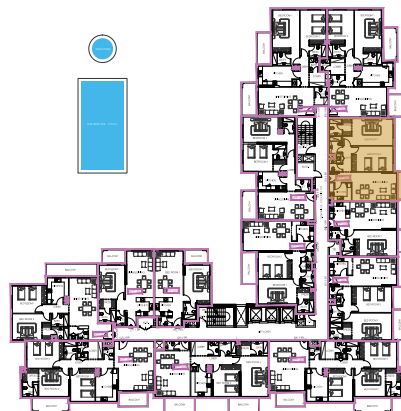
Drawings are provided by our consultants. All dimensions, features and amenities are approximate at time of printing. Actual area may vary from stated area. Drawings not to scale E&OE. The developer reserves the right to make revisions to the floor plans and any features, materials and dimensions mentioned without further notice.

TWO BEDROOM APARTMENT - TYPE 3B



- sellable area and balcony location may vary for unit to unit
- kitchen appliances and bath fixtures are indicative and may vary

UNIT NO : 03



TYPE:	Two B/R
AREA:	119.75 Sq m.
AREA:	1288.51 Sq Ft.
FACING:	Side Road View
DIRECTION:	North West

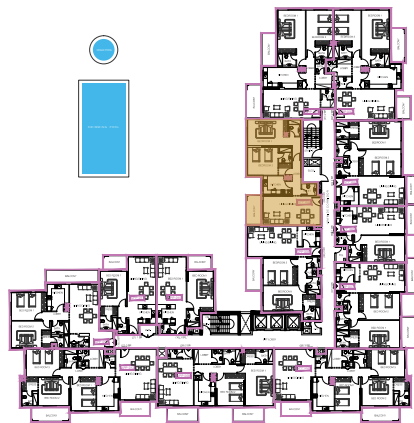
Drawings are provided by our consultants. All dimensions, features and amenities are approximate at time of printing. Actual area may vary from stated area. Drawings not to scale E&OE. The developer reserves the right to make revisions to the floor plans and any features, materials and dimensions mentioned without further notice.

TWO BEDROOM APARTMENT - TYPE 4B



- sellable area and balcony location may vary for unit to unit
- kitchen appliances and bath fixtures are indicative and may vary

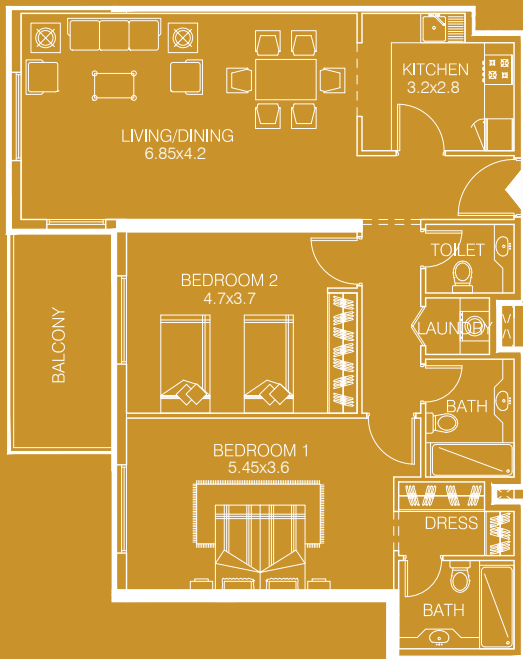
UNIT NO : 04



TYPE:	Two B/R
AREA:	125.32 Sq m.
AREA:	1348.44 Sq Ft.
FACING:	Pool View
DIRECTION:	South East

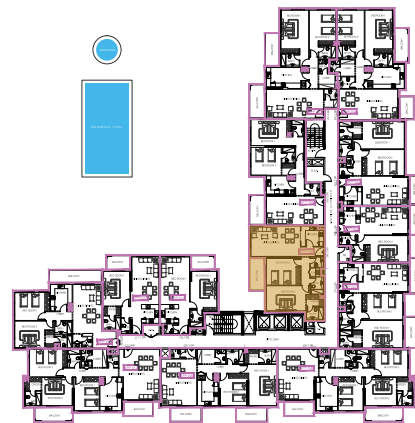
Drawings are provided by our consultants. All dimensions, features and amenities are approximate at time of printing. Actual area may vary from stated area. Drawings not to scale E&OE. The developer reserves the right to make revisions to the floor plans and any features, materials and dimensions mentioned without further notice.

TWO BEDROOM APARTMENT - TYPE 5B



- sellable area and balcony location may vary for unit to unit
- kitchen appliances and bath fixtures are indicative and may vary

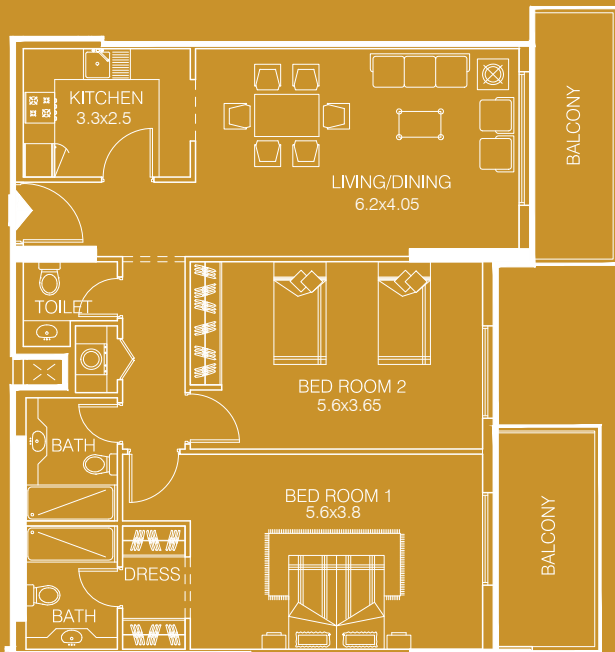
UNIT NO : 06



TYPE:	Two B/R
AREA:	122.27 Sq m.
AREA:	1315.63 Sq Ft.
FACING:	Pool View
DIRECTION:	South East

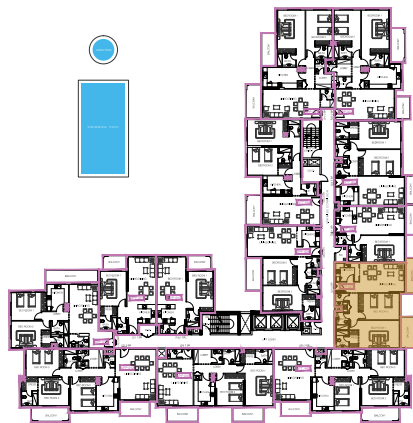
Drawings are provided by our consultants. All dimensions, features and amenities are approximate at time of printing. Actual area may vary from stated area. Drawings not to scale E&OE. The developer reserves the right to make revisions to the floor plans and any features, materials and dimensions mentioned without further notice.

TWO BEDROOM APARTMENT - TYPE 6B



- sellable area and balcony location may vary for unit to unit
- kitchen appliances and bath fixtures are indicative and may vary

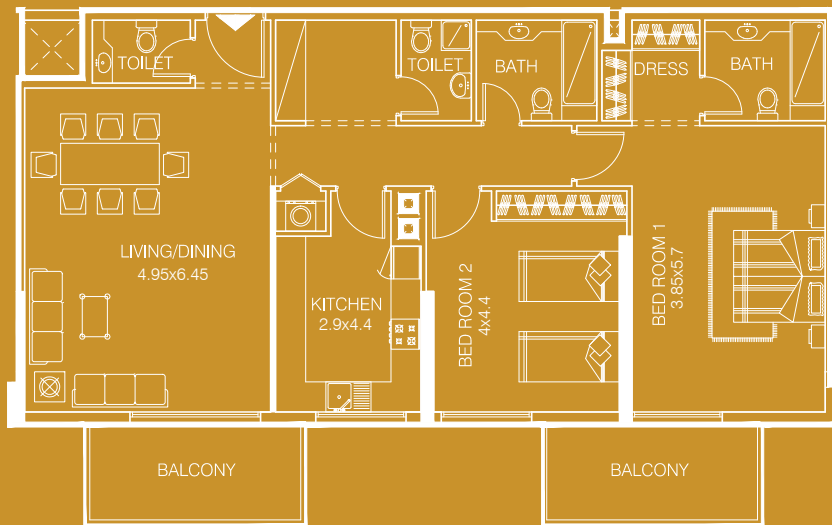
UNIT NO : 07



TYPE:	Two B/R
AREA:	129.87 Sq m.
AREA:	1397.40 Sq Ft.
FACING:	Side Road View
DIRECTION:	North West

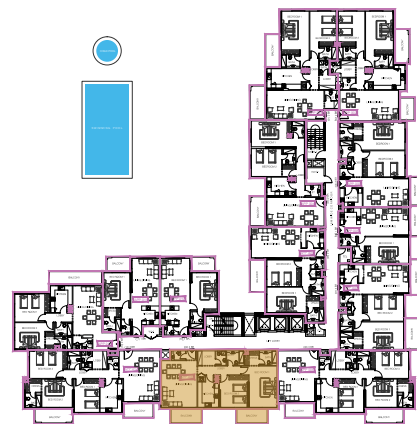
Drawings are provided by our consultants. All dimensions, features and amenities are approximate at time of printing. Actual area may vary from stated area. Drawings not to scale E&OE. The developer reserves the right to make revisions to the floor plans and any features, materials and dimensions mentioned without further notice.

TWO BEDROOM APARTMENT - TYPE 7B



- sellable area and balcony location may vary for unit to unit
- kitchen appliances and bath fixtures are indicative and may vary

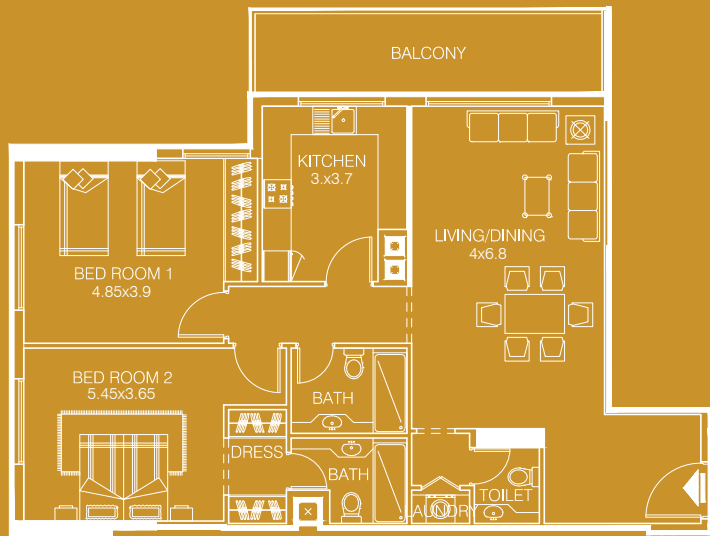
UNIT NO : 09



TYPE:	Two B/R
AREA:	149.16 Sq m.
AREA:	1604.96 Sq Ft.
FACING:	Community View (Road Facing)
DIRECTION:	North East

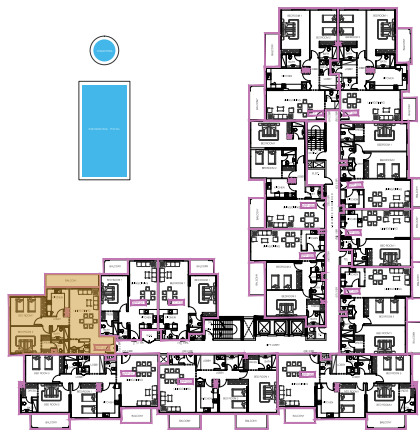
Drawings are provided by our consultants. All dimensions, features and amenities are approximate at time of printing. Actual area may vary from stated area. Drawings not to scale E&OE. The developer reserves the right to make revisions to the floor plans and any features, materials and dimensions mentioned without further notice.

TWO BEDROOM APARTMENT - TYPE 8B



- sellable area and balcony location may vary for unit to unit
- kitchen appliances and bath fixtures are indicative and may vary

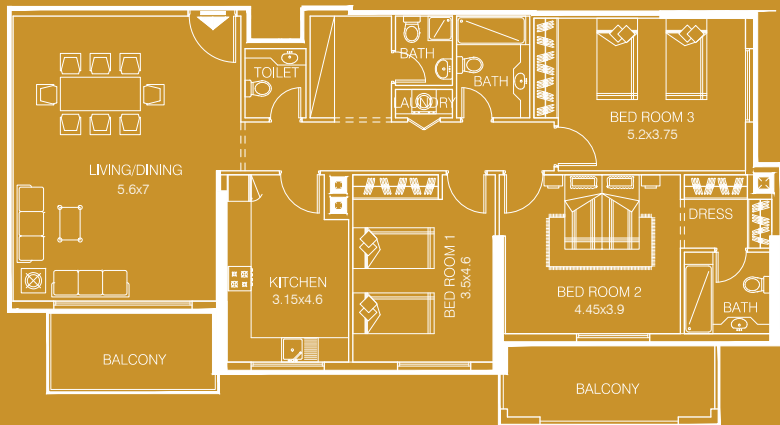
UNIT NO: 13



TYPE:	Two B/R
AREA:	126.66 Sq m.
AREA:	1362.86 Sq Ft.
FACING:	Pool View
DIRECTION:	South West

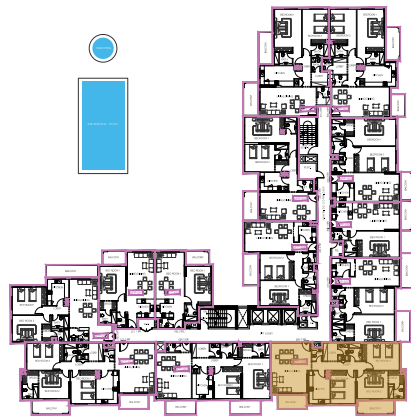
Drawings are provided by our consultants. All dimensions, features and amenities are approximate at time of printing. Actual area may vary from stated area. Drawings not to scale E&OE. The developer reserves the right to make revisions to the floor plans and any features, materials and dimensions mentioned without further notice.

THREE BEDROOM APARTMENT - TYPE 1C



- sellable area and balcony location may vary for unit to unit
- kitchen appliances and bath fixtures are indicative and may vary

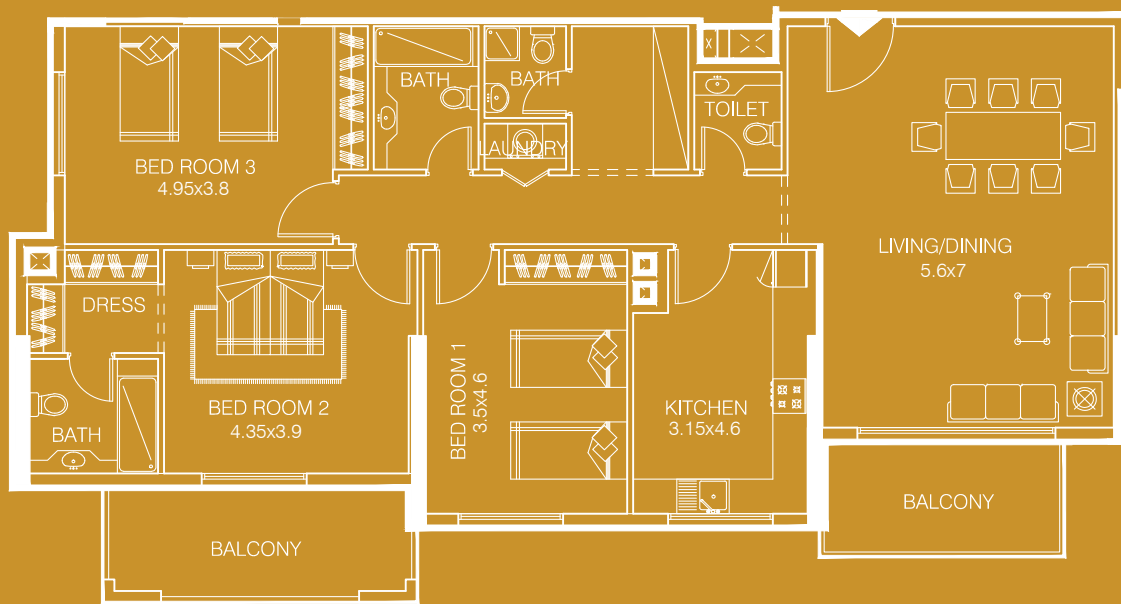
UNIT NO : 08



TYPE:	Three B/R
AREA:	171.68 Sq m.
AREA:	1847.28 Sq Ft.
FACING:	Community View (Road Facing)
DIRECTION:	North East

Drawings are provided by our consultants. All dimensions, features and amenities are approximate at time of printing. Actual area may vary from stated area. Drawings not to scale E&OE. The developer reserves the right to make revisions to the floor plans and any features, materials and dimensions mentioned without further notice.

THREE BEDROOM APARTMENT - TYPE 2C

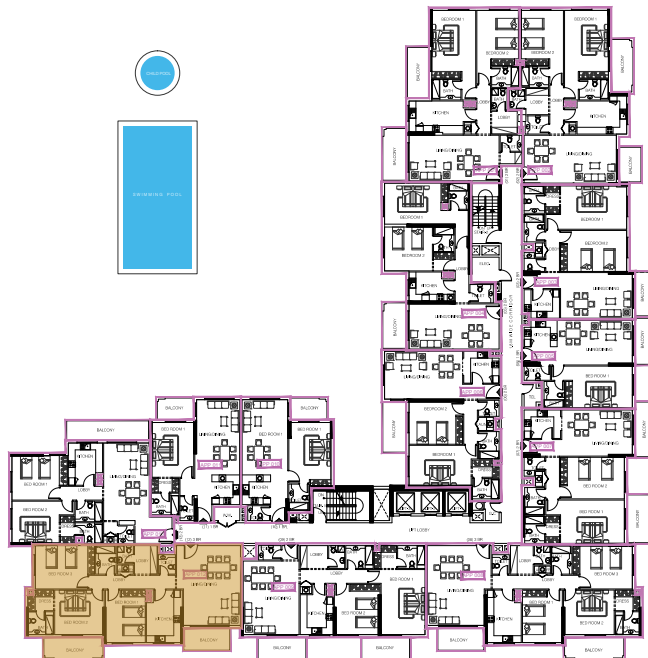


- sellable area and balcony location may vary for unit to unit
- kitchen appliances and bath fixtures are indicative and may vary

UNIT NO : 12



TYPE:	Three B/R
AREA:	172.03 Sq m.
AREA:	1851.04 Sq Ft.
FACING:	Community View (Road Facing)
DIRECTION:	North East



Drawings are provided by our consultants. All dimensions, features and amenities are approximate at time of printing. Actual area may vary from stated area. Drawings not to scale E&OE. The developer reserves the right to make revisions to the floor plans and any features, materials and dimensions mentioned without further notice.