

AZIZI TULIP

— R E S I D E N C E —

AZIZI TULIP is an eclectic and attractive G+11 floor building made up of one, two and three bedroom apartments. It is ideal for families looking to make an easy start to life. In close vicinity to all the major Dubai attractions, Azizi Tulip is also a few minutes drive from Ibn Battuta Mall, Sheikh Zayed Road and Emirates Road making it one of the most accessible and convenient communities to settle into. With simple aesthetics, minimalist design and generous landscaped areas makes it the ideal family home.

There is a selection of one, two and three bedroom apartments with walk in balconies and two and three bedroom apartments are all equipped with a maid's room.

Each apartment comes with allocated parking spaces depending on the size of the apartment.

FEATURES

- Combination of furnished 1 , 2 and 3 B/R Apartments with balcony / terrace along with private parking spaces
- Fully Fitted Kitchen
- Podium Level Swimming Pool along with Kids Pool area
- Fitness Club with Sauna and Steam Facilities at podium level
- High Ceiling Lobby with extravagant finishing
- Located at Al Furjan – Master Community

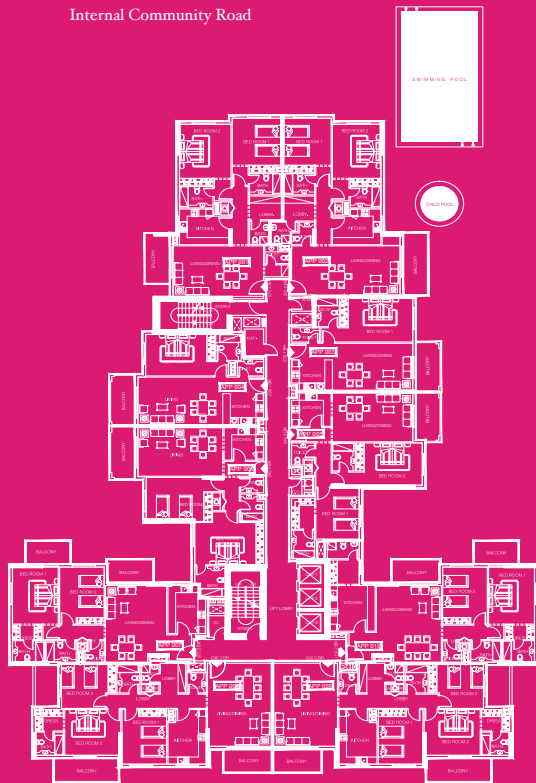
Project No: 1574
Escrow A/C Bank: ADCB
Escrow A/C No: 10174999159016

FACT SHEET

Total no. of units:	99
One bedroom:	20
Two bedroom:	59
Three bedroom:	20
Total land area:	3081 sq.m.
Built up area:	20,300 sq.m.



Side Road View



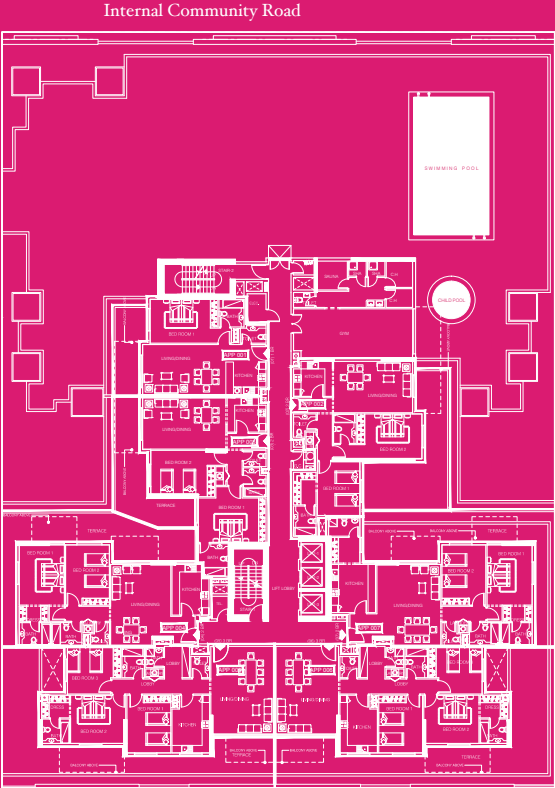
Community View
Road Facing (D - 59)

Typical Floor Plate



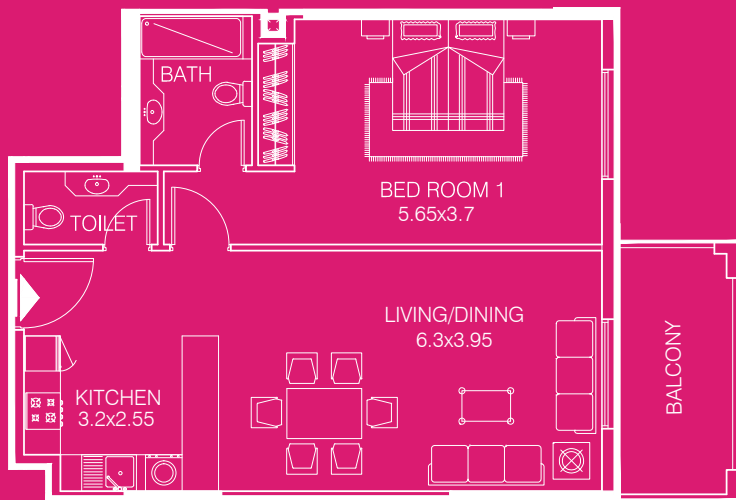
Podium Floor Plate

Side Road View



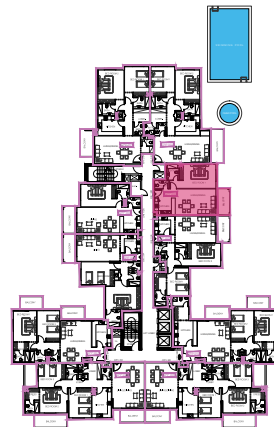
Community View
Road Facing (D - 59)

ONE BEDROOM APARTMENT - TYPE 1A



- sellable area and balcony location may vary for unit to unit
- kitchen appliances and bath fixtures are indicative and may vary

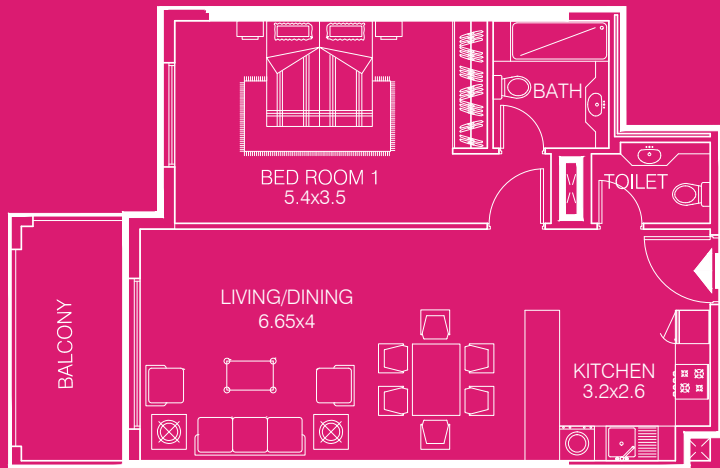
UNIT NO : 03



TYPE:	One B/R
AREA:	83.27 Sq m.
AREA:	895.99 Sq Ft.
FACING:	Pool View
DIRECTION:	North West

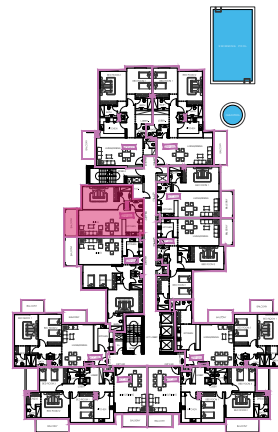
Drawings are provided by our consultants. All dimensions, features and amenities are approximate at time of printing. Actual area may vary from stated area. Drawings not to scale E&OE. The developer reserves the right to make revisions to the floor plans and any features, materials and dimensions mentioned without further notice.

ONE BEDROOM APARTMENT - TYPE 2A



- sellable area and balcony location may vary for unit to unit
- kitchen appliances and bath fixtures are indicative and may vary

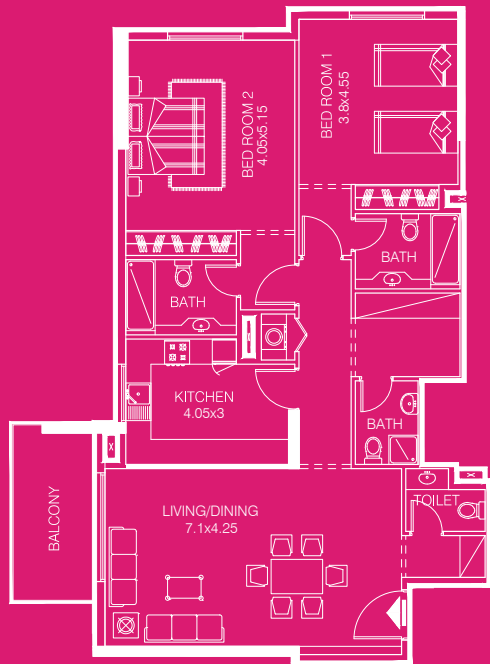
UNIT NO : 04



TYPE:	One B/R
AREA:	84.11 Sq m.
AREA:	905.02 Sq Ft.
FACING:	Garden View
DIRECTION:	South East

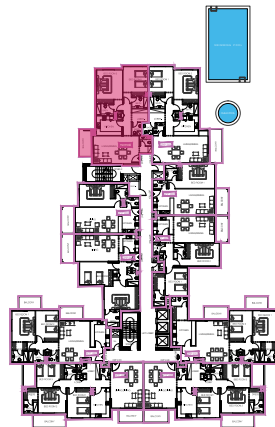
Drawings are provided by our consultants. All dimensions, features and amenities are approximate at time of printing. Actual area may vary from stated area. Drawings not to scale E&OE. The developer reserves the right to make revisions to the floor plans and any features, materials and dimensions mentioned without further notice.

TWO BEDROOM APARTMENT - TYPE 1B



- sellable area and balcony location may vary for unit to unit
- kitchen appliances and bath fixtures are indicative and may vary

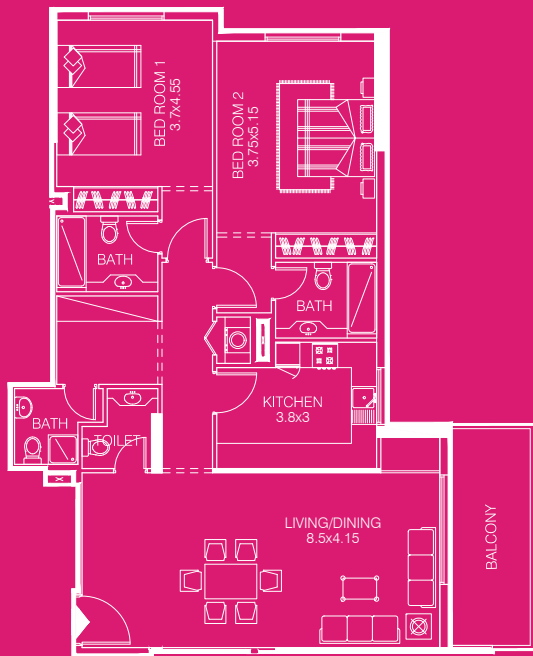
UNIT NO : 01



TYPE:	Two B/R
AREA:	135.54 Sq m.
AREA:	1458.41 Sq Ft.
FACING:	Garden View
DIRECTION:	South East

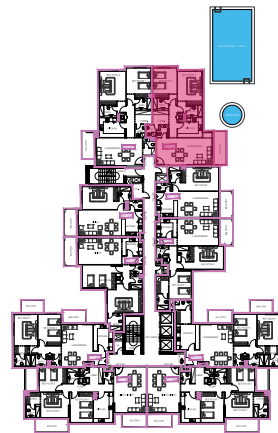
Drawings are provided by our consultants. All dimensions, features and amenities are approximate at time of printing. Actual area may vary from stated area. Drawings not to scale E&OE. The developer reserves the right to make revisions to the floor plans and any features, materials and dimensions mentioned without further notice.

TWO BEDROOM APARTMENT -TYPE 2B



- sellable area and balcony location may vary for unit to unit
- kitchen appliances and bath fixtures are indicative and may vary

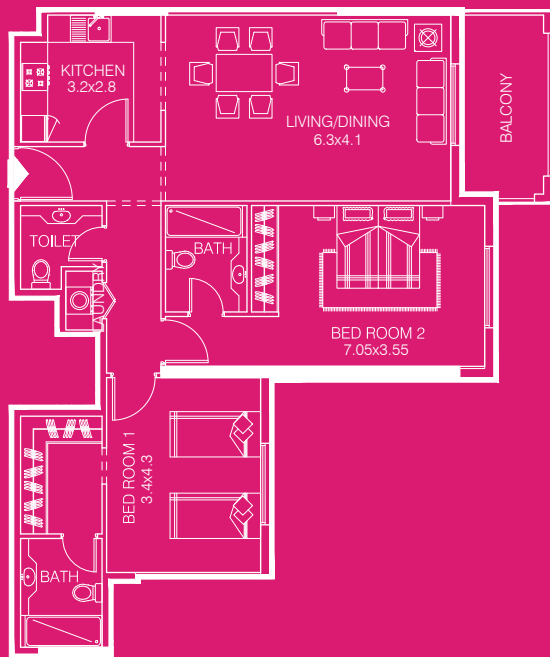
UNIT NO : 02



TYPE:	Two B/R
AREA:	137.93 Sq m.
AREA:	1484.13 Sq Ft.
FACING:	Pool View
DIRECTION:	North West

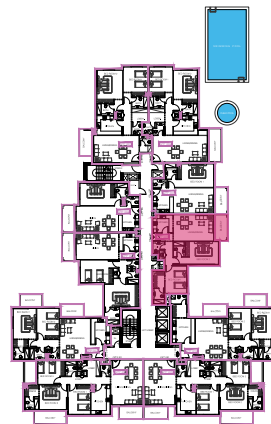
Drawings are provided by our consultants. All dimensions, features and amenities are approximate at time of printing. Actual area may vary from stated area. Drawings not to scale E&OE. The developer reserves the right to make revisions to the floor plans and any features, materials and dimensions mentioned without further notice.

TWO BEDROOM APARTMENT - TYPE 3B



- sellable area and balcony location may vary for unit to unit
- kitchen appliances and bath fixtures are indicative and may vary

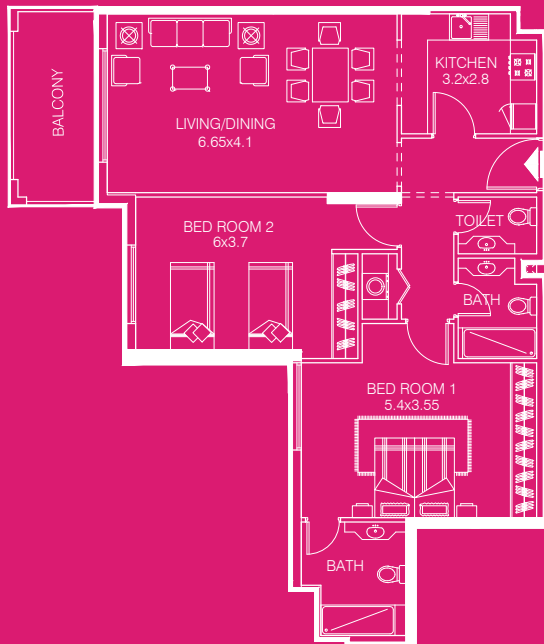
UNIT NO : 05



TYPE:	Two B/R
AREA:	117.53 Sq m.
AREA:	1264.62 Sq Ft.
FACING:	Pool View
DIRECTION:	North West

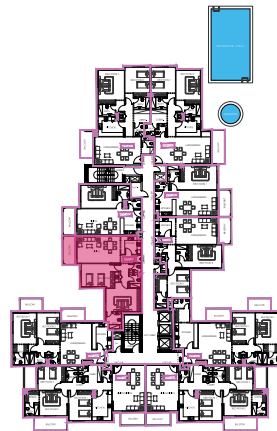
Drawings are provided by our consultants. All dimensions, features and amenities are approximate at time of printing. Actual area may vary from stated area. Drawings not to scale E&OE. The developer reserves the right to make revisions to the floor plans and any features, materials and dimensions mentioned without further notice.

TWO BEDROOM APARTMENT - TYPE 4B



- sellable area and balcony location may vary for unit to unit
- kitchen appliances and bath fixtures are indicative and may vary

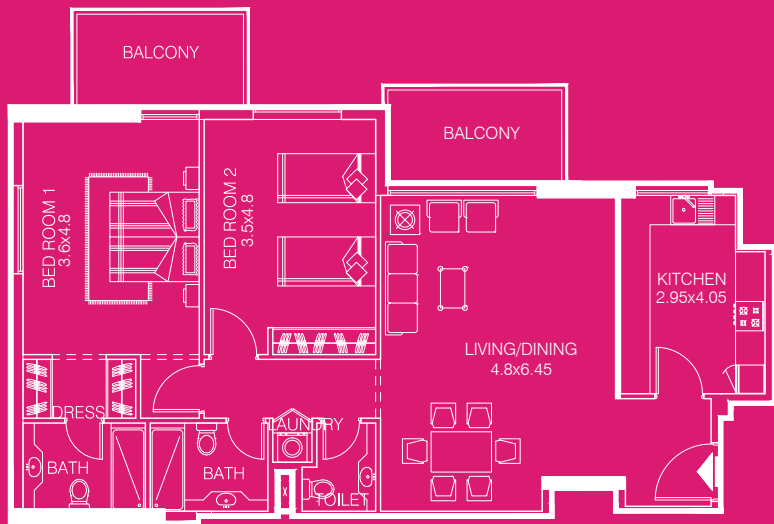
UNIT NO : 06



TYPE:	Two B/R
AREA:	118.79 Sq m.
AREA:	1278.18 Sq Ft.
FACING:	Garden View
DIRECTION:	South East

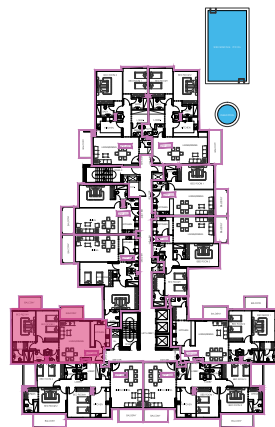
Drawings are provided by our consultants. All dimensions, features and amenities are approximate at time of printing. Actual area may vary from stated area. Drawings not to scale E&OE. The developer reserves the right to make revisions to the floor plans and any features, materials and dimensions mentioned without further notice.

TWO BEDROOM APARTMENT - TYPE 5B



- sellable area and balcony location may vary for unit to unit
- kitchen appliances and bath fixtures are indicative and may vary

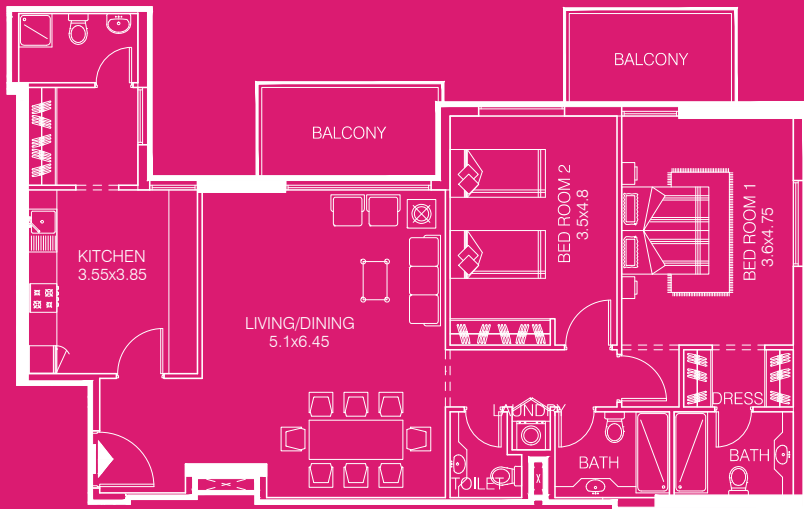
UNIT NO : 07



TYPE:	Two B/R
AREA:	128.51 Sq m.
AREA:	1382.77 Sq Ft.
FACING:	Garden View
DIRECTION:	South West

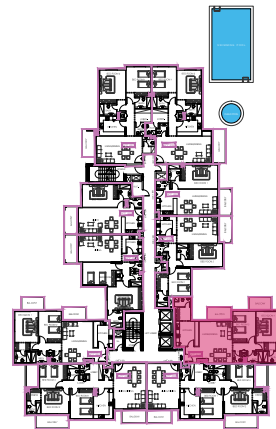
Drawings are provided by our consultants. All dimensions, features and amenities are approximate at time of printing. Actual area may vary from stated area. Drawings not to scale E&OE. The developer reserves the right to make revisions to the floor plans and any features, materials and dimensions mentioned without further notice.

TWO BEDROOM APARTMENT - TYPE 6B



- sellable area and balcony location may vary for unit to unit
- kitchen appliances and bath fixtures are indicative and may vary

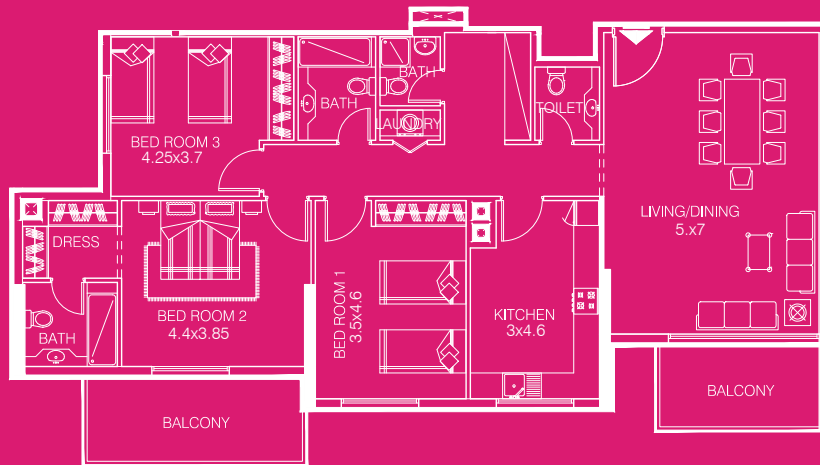
UNIT NO : 10



TYPE:	Two B/R
AREA:	144.81 Sq m.
AREA:	1558.16 Sq Ft.
FACING:	Pool View
DIRECTION:	South West

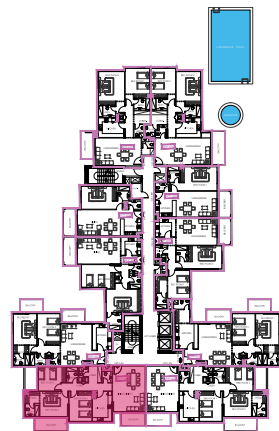
Drawings are provided by our consultants. All dimensions, features and amenities are approximate at time of printing. Actual area may vary from stated area. Drawings not to scale E&OE. The developer reserves the right to make revisions to the floor plans and any features, materials and dimensions mentioned without further notice.

THREE BEDROOM APARTMENT -TYPE 1C



- sellable area and balcony location may vary for unit to unit
- kitchen appliances and bath fixtures are indicative and may vary

UNIT NO : 08



TYPE: Three B/R

AREA: 163.81 Sq m.

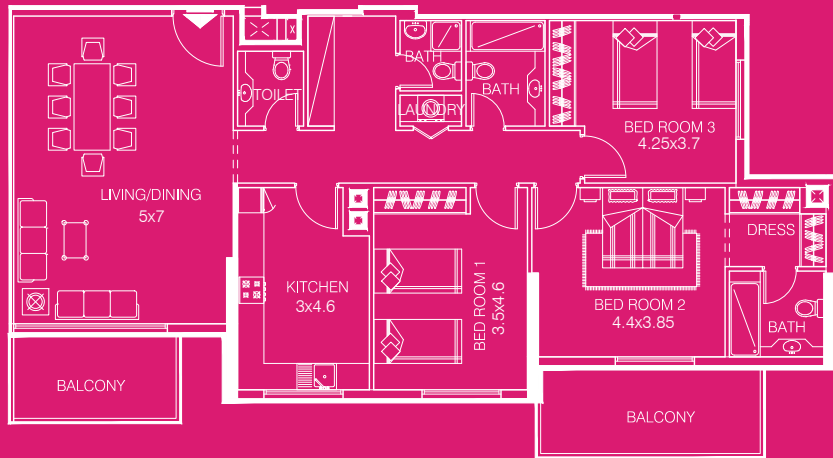
AREA: 1762.60 Sq Ft.

FACING: Community View
(Road Facing)

DIRECTION: North East

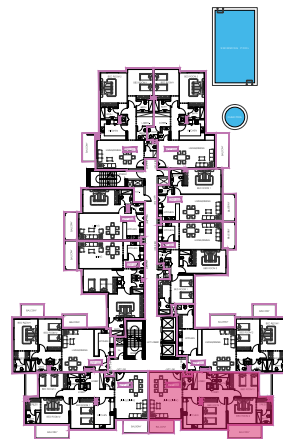
Drawings are provided by our consultants. All dimensions, features and amenities are approximate at time of printing. Actual area may vary from stated area. Drawings not to scale E&OE. The developer reserves the right to make revisions to the floor plans and any features, materials and dimensions mentioned without further notice.

THREE BEDROOM APARTMENT - TYPE 2C



- sellable area and balcony location may vary from unit to unit
- kitchen appliances and bath fixtures are indicative and may vary

UNIT NO : 09



TYPE:	Three B/R
AREA:	163.81 Sq m.
AREA:	1762.60 Sq Ft.
FACING:	Community View (Road Facing)
DIRECTION:	North East

Drawings are provided by our consultants. All dimensions, features and amenities are approximate at time of printing. Actual area may vary from stated area. Drawings not to scale E&OE. The developer reserves the right to make revisions to the floor plans and any features, materials and dimensions mentioned without further notice.