

# AZIZI FREESIA

— R E S I D E N C E —

AZIZI FREESIA is an elegant residential building in the heart of Al Furjan, conveniently located next to all the facilities provided in the area. It is part of the Azizi residential community offering a wealth of amenities. The 11 floor building offers one, two and three bedroom spacious apartments all with fully fitted kitchens and modern high quality European finishes. With all the main roads, Sheikh Zayed Road and Emirates Road, conveniently located on the boarder of this family community making it one of the most accessible and convenient communities to settle into.

Azizi Fressia offers the perfect home for a perfect start for any family in one of the most safest countries in the world – The United Arab Emirates.

## FEATURES

- Combination of furnished 1 , 2 and 3 B/R Apartments with balcony / terrace along with private parking spaces
- Fully Fitted Kitchen
- Podium Level Swimming Pool along with Kids Pool area
- Fitness Club with Sauna and Steam Facilities at podium level
- High Ceiling Lobby with extravagant finishing
- Located at Al Furjan – Master Community

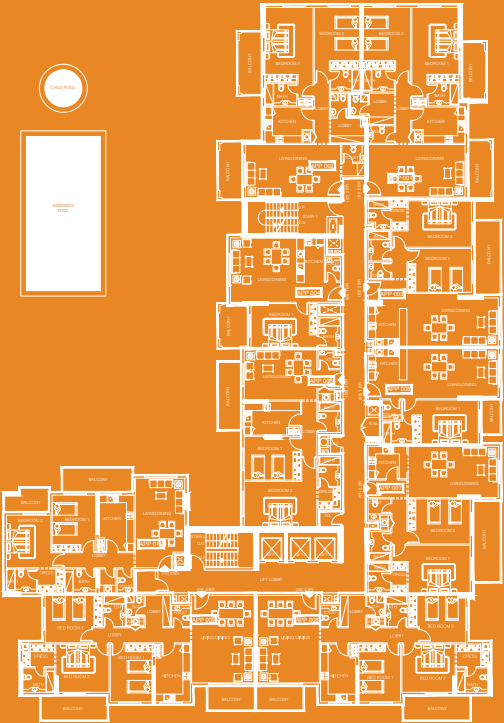
Project No: 1573  
Escrow A/C Bank: ADCB  
Escrow A/C No: 10174999159012

## FACT SHEET

Total no. of units:	99
One bedroom:	20
Two bedroom:	59
Three bedroom:	20
Total land area:	3129 sq.m.
Built up area:	20,500 sq.m.



Internal Community Road

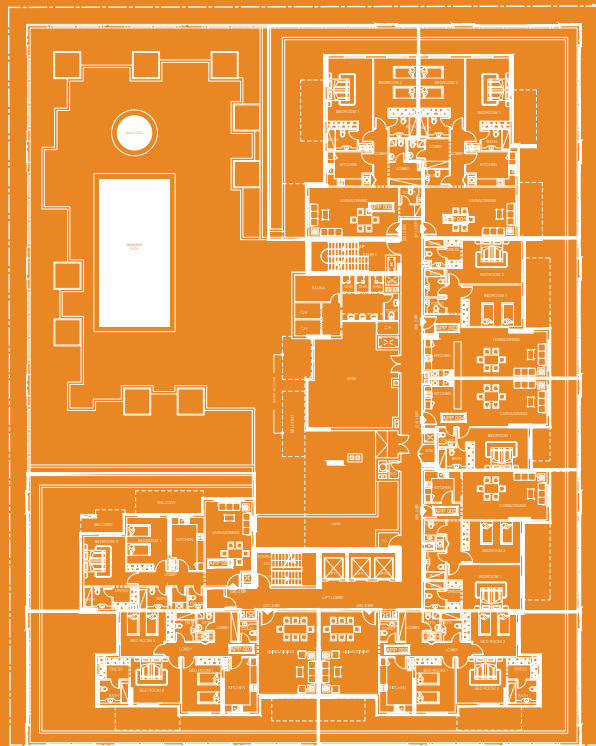


Community View  
Road Facing (D - 59)

Azizi Neighborhood Pool View

# Typical Floor Plate

# Podium Floor Plate

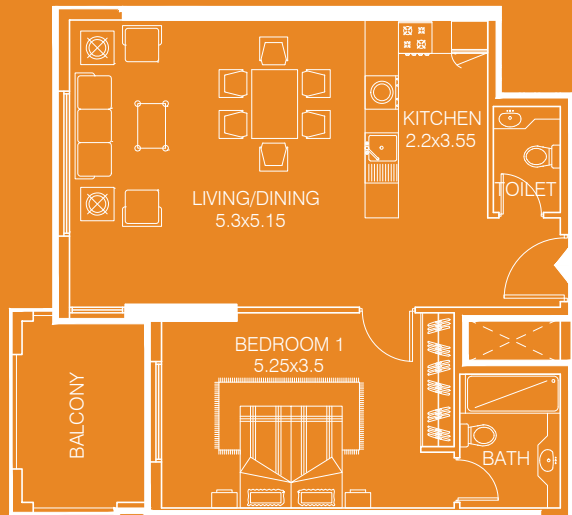


Internal Community Road

Azizi Neighborhood Pool View

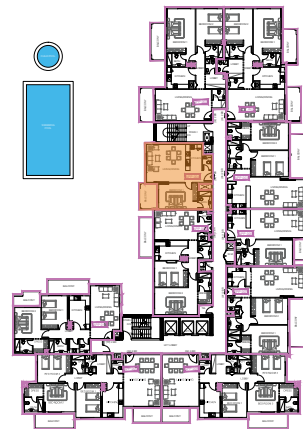
Community View  
Road Facing (D - 59)

## ONE BEDROOM APARTMENT -TYPE 1A



- sellable area and balcony location may vary for unit to unit
- kitchen appliances and bath fixtures are indicative and may vary

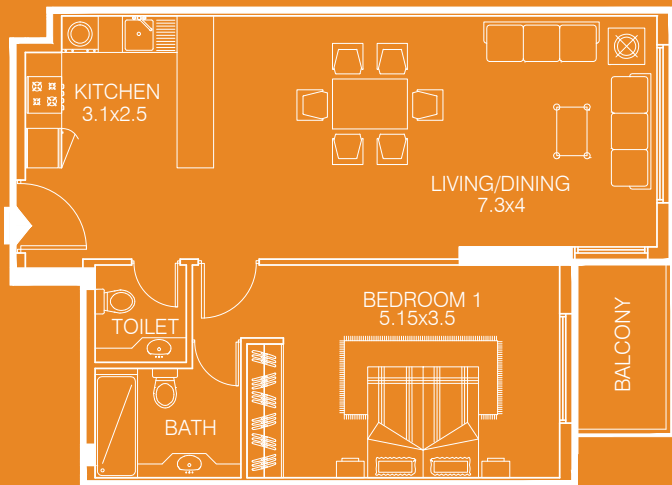
## UNIT NO : 04



TYPE:	One B/R
AREA:	83.20 Sq.m.
AREA:	895.23 Sq. ft
FACING:	Pool View
DIRECTION:	South East

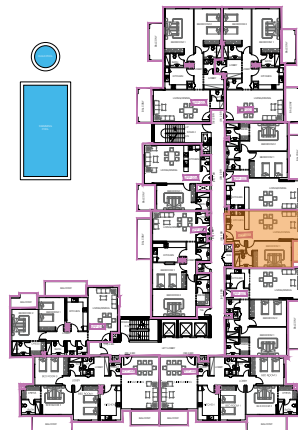
Drawings are provided by our consultants. All dimensions, features and amenities are approximate at time of printing. Actual area may vary from stated area. Drawings not to scale E&OE. The developer reserves the right to make revisions to the floor plans and any features, materials and dimensions mentioned without further notice.

## ONE BEDROOM APARTMENT - TYPE 2A



- sellable area and balcony location may vary for unit to unit
- kitchen appliances and bath fixtures are indicative and may vary

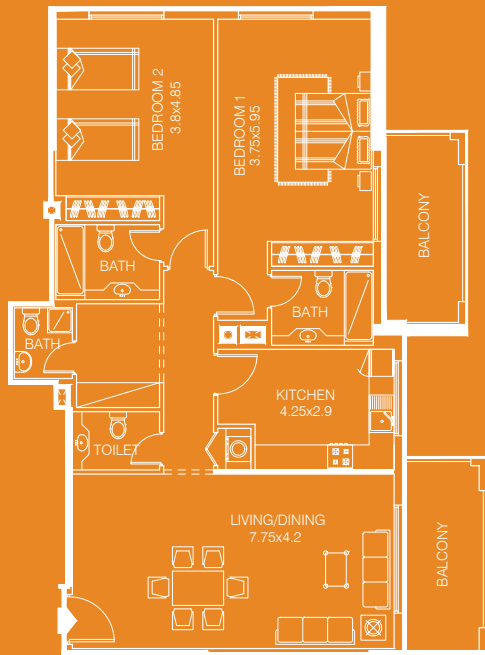
UNIT NO : 05



TYPE:	One B/R
AREA:	79.25 Sq. m.
AREA:	852.73 Sq. ft
FACING:	Pool View
DIRECTION:	North West

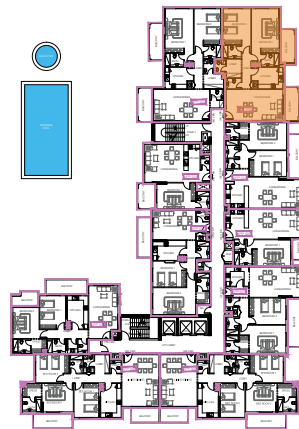
Drawings are provided by our consultants. All dimensions, features and amenities are approximate at time of printing. Actual area may vary from stated area. Drawings not to scale E&OE. The developer reserves the right to make revisions to the floor plans and any features, materials and dimensions mentioned without further notice.

## TWO BEDROOM APARTMENT - TYPE 1B



- sellable area and balcony location may vary for unit to unit
- kitchen appliances and bath fixtures are indicative and may vary

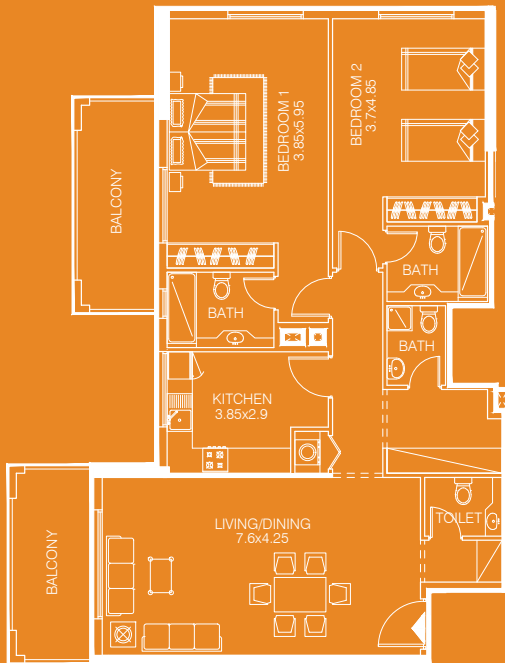
UNIT NO : 01



TYPE:	Two B/R
AREA:	147.04 Sq.m.
AREA:	1582.15 Sq. ft
FACING:	Pool View
DIRECTION:	North West

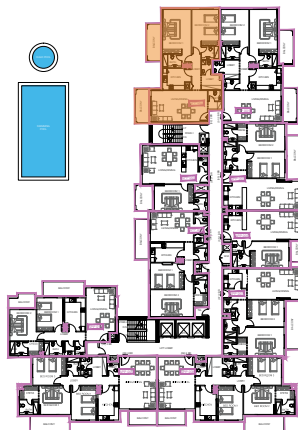
Drawings are provided by our consultants. All dimensions, features and amenities are approximate at time of printing. Actual area may vary from stated area. Drawings not to scale E&OE. The developer reserves the right to make revisions to the floor plans and any features, materials and dimensions mentioned without further notice.

## TWO BEDROOM APARTMENT - TYPE 2B



- sellable area and balcony location may vary for unit to unit
- kitchen appliances and bath fixtures are indicative and may vary

UNIT NO : 02

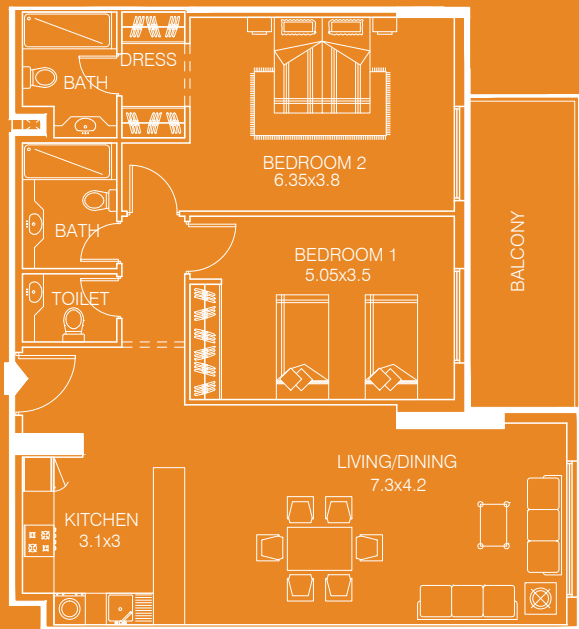


TYPE:	Two B/R
AREA:	149.16 Sq. m.
AREA:	1604.96 Sq. ft
FACING:	Pool View
DIRECTION:	South East

Drawings are provided by our consultants. All dimensions, features and amenities are approximate at time of printing. Actual area may vary from stated area. Drawings not to scale E&OE. The developer reserves the right to make revisions to the floor plans and any features, materials and dimensions mentioned without further notice.

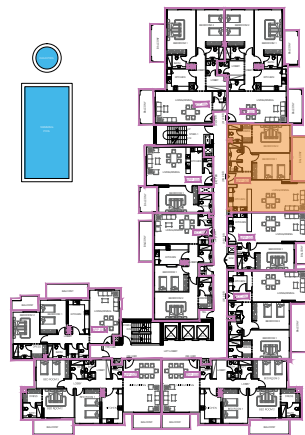


## TWO BEDROOM APARTMENT - TYPE 3B



- sellable area and balcony location may vary for unit to unit
- kitchen appliances and bath fixtures are indicative and may vary

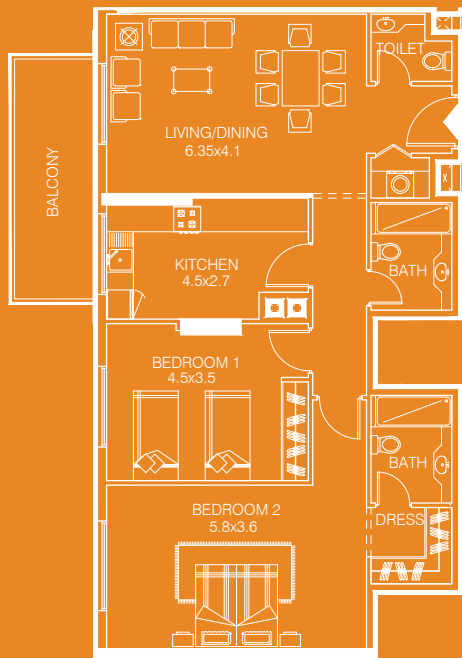
UNIT NO : 03



TYPE:	Two B/R
AREA:	124.70 Sq.m.
AREA:	1341.77 Sq. ft
FACING:	Pool View
DIRECTION:	North West

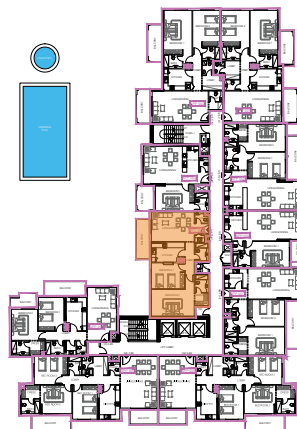
Drawings are provided by our consultants. All dimensions, features and amenities are approximate at time of printing. Actual area may vary from stated area. Drawings not to scale E&OE. The developer reserves the right to make revisions to the floor plans and any features, materials and dimensions mentioned without further notice.

## TWO BEDROOM APARTMENT - TYPE 4B



- sellable area and balcony location may vary for unit to unit
- kitchen appliances and bath fixtures are indicative and may vary

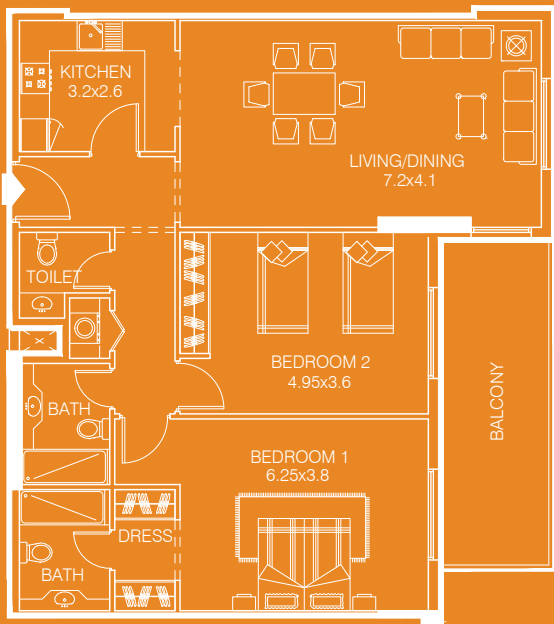
UNIT NO : 06



TYPE:	Two B/R
AREA:	121.91 Sq. m.
AREA:	1311.75 Sq. ft
FACING:	Pool View
DIRECTION:	South East

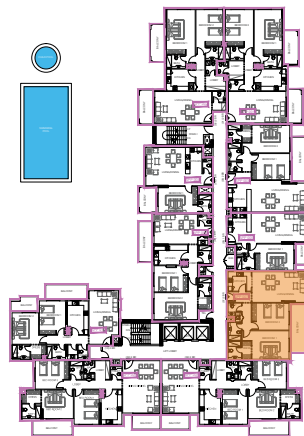
Drawings are provided by our consultants. All dimensions, features and amenities are approximate at time of printing. Actual area may vary from stated area. Drawings not to scale E&OE. The developer reserves the right to make revisions to the floor plans and any features, materials and dimensions mentioned without further notice.

## TWO BEDROOM APARTMENT - TYPE 5B



- sellable area and balcony location may vary for unit to unit
- kitchen appliances and bath fixtures are indicative and may vary

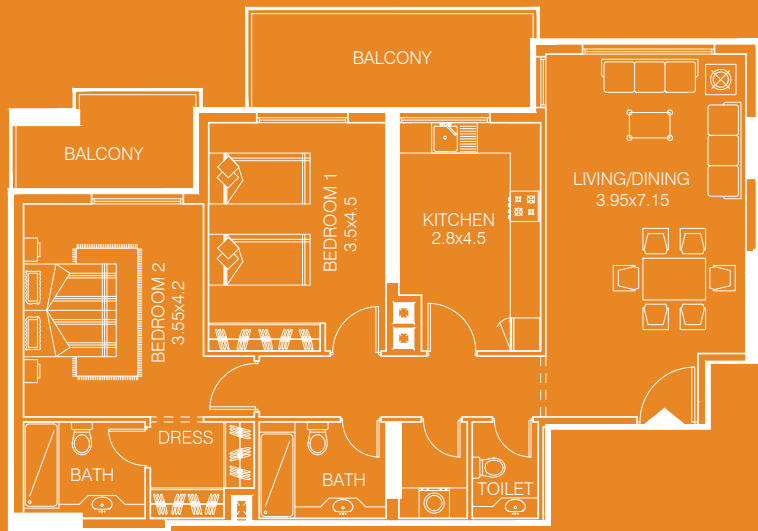
## UNIT NO : 07



TYPE:	Two B/R
AREA:	127.00 Sq.m.
AREA:	1366.52 Sq. ft
FACING:	Pool View
DIRECTION:	North West

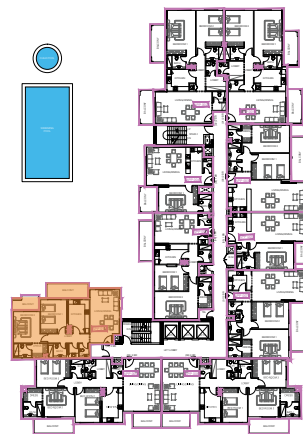
Drawings are provided by our consultants. All dimensions, features and amenities are approximate at time of printing. Actual area may vary from stated area. Drawings not to scale E&OE. The developer reserves the right to make revisions to the floor plans and any features, materials and dimensions mentioned without further notice.

## TWO BEDROOM APARTMENT - TYPE 6B



- sellable area and balcony location may vary for unit to unit
- kitchen appliances and bath fixtures are indicative and may vary

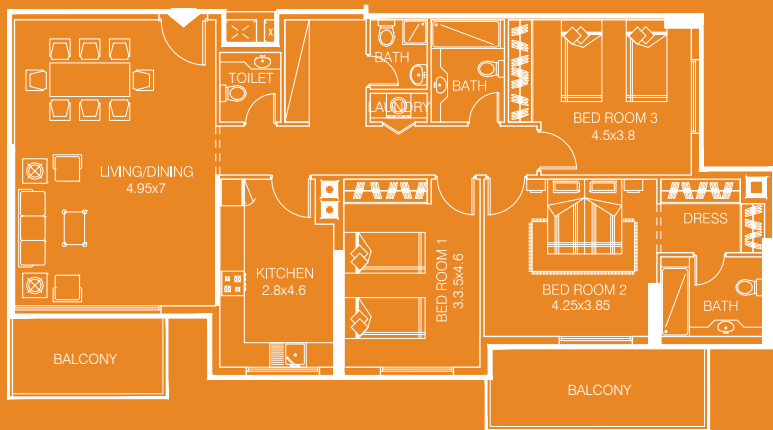
UNIT NO : 10



TYPE:	Two B/R
AREA:	129.61 Sq. m.
AREA:	1394.60 Sq. ft
FACING:	Pool View
DIRECTION:	South West

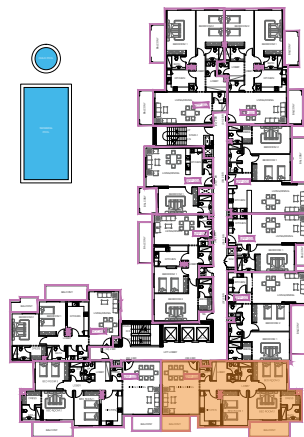
Drawings are provided by our consultants. All dimensions, features and amenities are approximate at time of printing. Actual area may vary from stated area. Drawings not to scale E&OE. The developer reserves the right to make revisions to the floor plans and any features, materials and dimensions mentioned without further notice.

## THREE BEDROOM APARTMENT - TYPE 1C



- sellable area and balcony location may vary for unit to unit
- kitchen appliances and bath fixtures are indicative and may vary

## UNIT NO : 08



TYPE: Three B/R

AREA: 165.72 Sq.m.

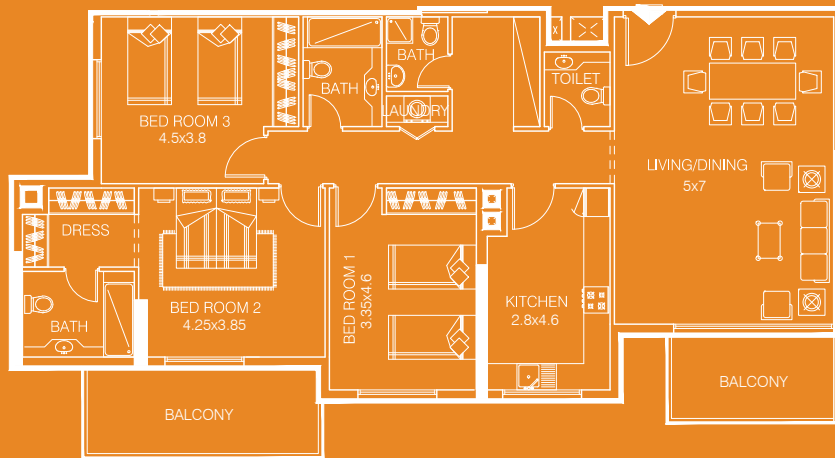
AREA: 1783.15 Sq. ft

FACING: Community View  
(Road Facing)

DIRECTION: North East

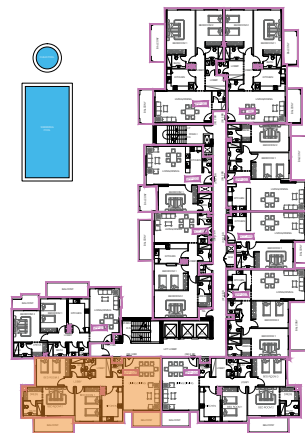
Drawings are provided by our consultants. All dimensions, features and amenities are approximate at time of printing. Actual area may vary from stated area. Drawings not to scale E&OE. The developer reserves the right to make revisions to the floor plans and any features, materials and dimensions mentioned without further notice.

## THREE BEDROOM APARTMENT - TYPE 2C



- sellable area and balcony location may vary for unit to unit
- kitchen appliances and bath fixtures are indicative and may vary

UNIT NO : 09



TYPE:	Three B/R
AREA:	166.11 Sq. m.
AREA:	1787.34 Sq. ft
FACING:	Community View (Road Facing)
DIRECTION:	North East

Drawings are provided by our consultants. All dimensions, features and amenities are approximate at time of printing. Actual area may vary from stated area. Drawings not to scale E&OE. The developer reserves the right to make revisions to the floor plans and any features, materials and dimensions mentioned without further notice.